

Sudden Unexpected Infant Deaths

Maryland, 2015-2019



264

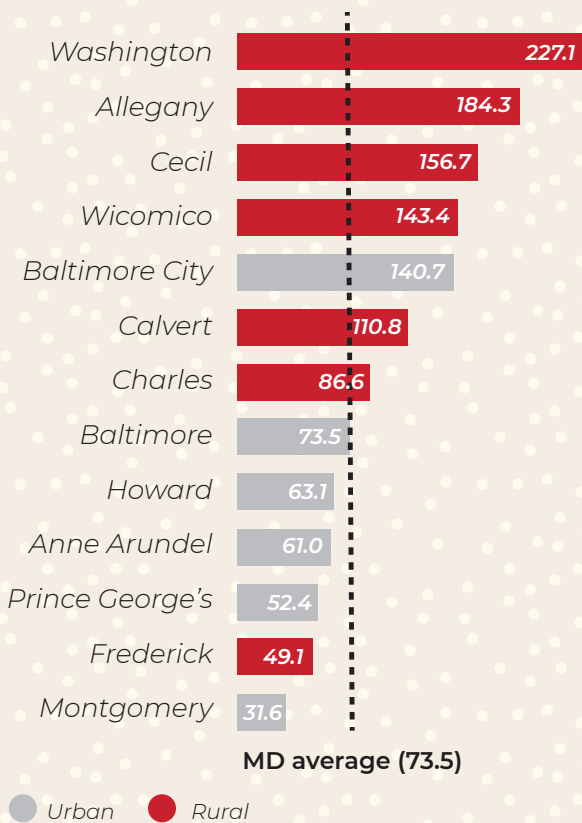
SUID cases occurred between 2015 and 2019 in Maryland and were reviewed by the State Child Fatality Review (CFR) Team. During this time period, Maryland SUID cases occurred at a rate of **73.5** deaths per 100,000 live births, while the national SUID rate was **91.7**.

Data shown below are from the 2015-2019 period, unless otherwise noted.

In Maryland, high rates of SUID occurred in some rural and urban jurisdictions.

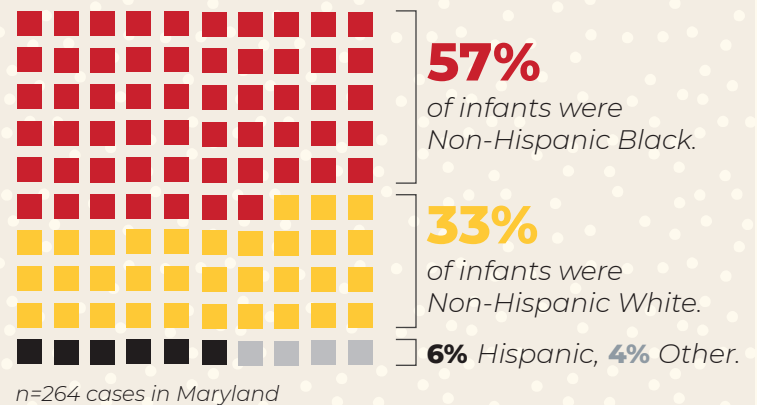
33% of cases occurred in rural jurisdictions.

SUID rates per 100,000 live births by jurisdiction*



*Based on Maryland Vital Statistics Administration live birth data. Counties not displayed here had fewer than five SUID cases in this period.

Racial and ethnic disparities continue to be seen in SUID cases, in Maryland and across the US.



SUID rates per 100,000 live births by race/ethnicity

	Maryland	National, 2014-2018*
Non-Hispanic Other	38.3	55.8
Non-Hispanic Black	131.2	186.9
Non-Hispanic White	55.7	84.9
Hispanic	26.2	54.1

*National SUID rates by race/ethnicity for 2015-2019 not yet available.

Recommendations from the CFR Program:

- Increase community awareness of SUID associated risk factors and prevention, especially in jurisdictions with highest SUID rates and disproportionately-affected communities.
- Continue to review and report SUID cases to the National Child Death Review Case Reporting System to improve surveillance of infant deaths.
- Stay updated with guidance from NIH and contact your Maryland Department of Health for resources.

