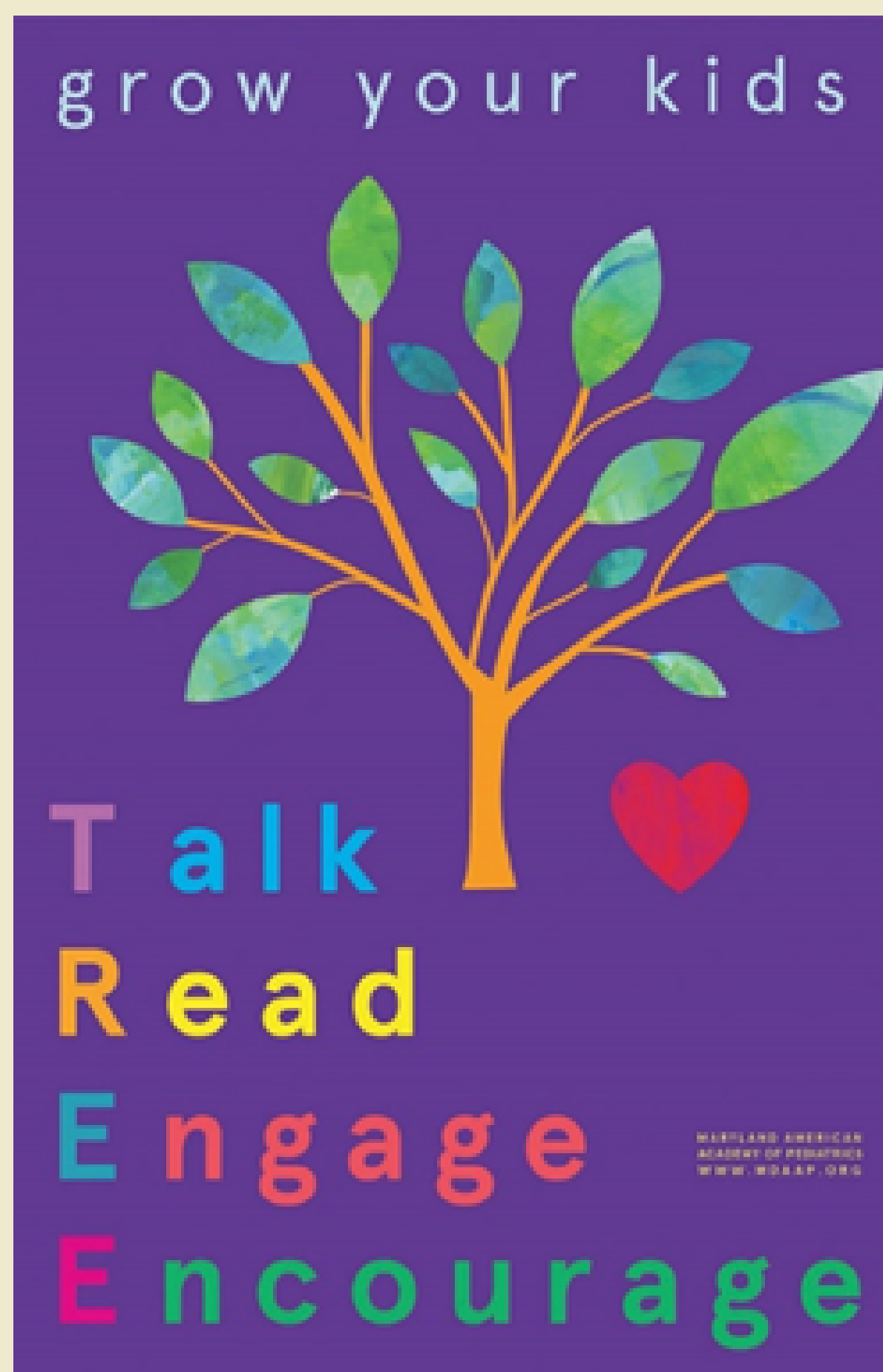


# The TREEHOUSE Program

Continuing Education for Pediatric  
Healthcare Providers

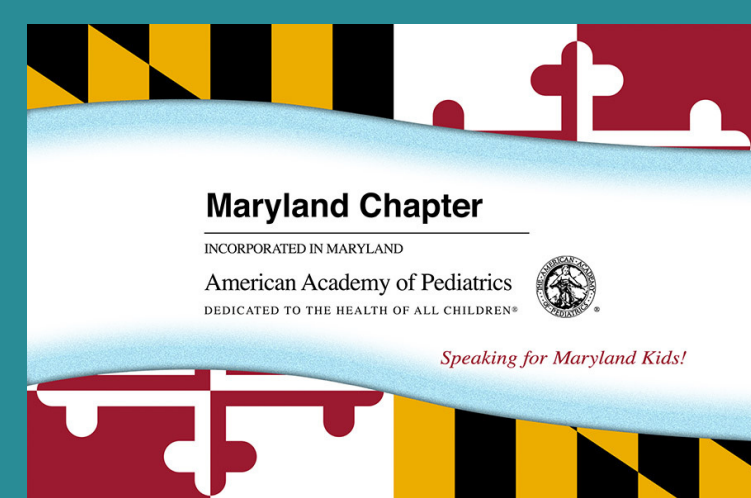
Earn 12 CME, 12 MOC 2 & 25 MOC 4 credits by taking part!

The Maryland Chapter, American Academy of Pediatrics is partnering with the University of Maryland School of Social Work's The Institute to evaluate The TREEHOUSE Program. As part of your participation you will be asked to engage in six 1-hour group coaching sessions and complete surveys to evaluate the training.



Learn about this exciting, innovative program to conduct dedicated "developmental coaching" sessions with your young patients (under 2 years) and their families to strengthen parent-child interactions using a virtual platform.

Contact Ken Tellerman M.D., Chair, MDAAP Emotional Health Committee at [ktpedmd@aol.com](mailto:ktpedmd@aol.com) if you are interested in participating or learning more about the 6 month program.



# Credit Statements

---

This activity has been planned and implemented in accordance with the accreditation requirements and policies of the Accreditation Council for Continuing Medical Education (ACCME) through the joint providership of the American Academy of Pediatrics (AAP) and the Maryland Chapter of the AAP (MDAAP). The American Academy of Pediatrics is accredited by the ACCME to provide continuing medical education for physicians.

The AAP designates this Other (Independent Learning, Live webinars) activity for a maximum of 12.0 AMA PRA Category 1 Credit(s)<sup>™</sup>. Physicians should claim only the credit commensurate with the extent of their participation in the activity.

This activity is acceptable for a maximum of 12.0 AAP credits. These credits can be applied toward the AAP CME/CPD Award available to Fellows and Candidate Members of the American Academy of Pediatrics.

PAs may claim a maximum of 12.0 Category 1 credits for completing this activity. NCCPA accepts AMA PRA Category 1 Credit<sup>™</sup> from organizations accredited by ACCME or a recognized state medical society.

This program is accredited for 12.0 NAPNAP CE contact hours of which 0 contain pharmacology (Rx) content, (0 related to psychopharmacology) (0 related to controlled substances), per the National Association of Pediatric Nurse Practitioners (NAPNAP) Continuing Education Guidelines.

---

## MOC Statements:

Successful completion of this CME activity, which includes participation in the evaluation component, enables the learner to earn up to 12.0 MOC points in the American Board of Pediatrics' (ABP) Maintenance of Certification (MOC) program. It is the CME activity provider's responsibility to submit learner completion information to ACCME for the purpose of granting ABP MOC credit.

This activity would be eligible for 25 MOC Part 4 points from the American Board of Pediatrics.